
Report To:	Education and Communities Committee	Date:	1 September 2020
Report By:	Corporate Director Education, Communities and Organisational Development	Report No:	EDUCOM/39/20/HS
Contact Officer:	Hugh Scott, Service Manager Community Learning Development, Community Safety & Resilience and Sport	Contact No:	01475 715450
Subject:	Inverclyde Community Safety Partnership Update (August 2020)		

1.0 PURPOSE

- 1.1 The purpose of this report is to provide the Education and Communities Committee with an update of activity from the Inverclyde Community Safety Partnership (CSP) Strategy Group following its recent meeting on 22 July 2020.
- 1.2 The report provides an update in regard to preparatory work for the forthcoming Annual Report (2019-20), Strategic Assessment 2020-22 and partnership activity as part of a wider Covid-19 recovery plan.

2.0 SUMMARY

- 2.1 The CSP Strategy Group is the senior officers group for community safety in Inverclyde. It acts as the scrutiny body for community safety activity in Inverclyde, and has responsibility for a number of groups including the CSP Coordinating Group and Violence Against Women Multi-Agency Partnership. The CSP Strategy Group also provides a direct link to the Inverclyde Alliance Board.
- 2.2 At its meeting on 9 December 2019, the Inverclyde Alliance Board endorsed changes to the governance structure of the CSP in Inverclyde leading to the preparation and future publication of a single community safety strategy for Inverclyde. The strategy will be presented to the Inverclyde Alliance Board on 6 October 2020.
- 2.3 At the request of the Corporate Director Education, Communities and Organisational Development, the CSP Strategy Group met on 22 July to consider future improvement actions in the context of a Covid-19 recovery plan. The CSP Strategy Group also considered progress around the community safety strategy and preparation of an annual report for 2019-20

3.0 RECOMMENDATIONS

- 3.1 That the Committee notes the content of the report particularly in relation to CSP activity in respect of a Covid-19 recovery plan.
- 3.2 That the Committee agrees to receive the published documents "Inverclyde Community Safety Partnership Strategy 2020-2022- Making Inverclyde Safer" and "Inverclyde Community Safety Partnership Annual Report 2019-20" at a future Committee meeting.

4.0 BACKGROUND

- 4.1 The Inverclyde Alliance Board at its meeting on 19 March 2018 approved new governance and delivery arrangements for community planning and the delivery of the LOIP in Inverclyde. Prior to the new governance arrangements for community planning, community safety reported to a previous Single Outcome Agreement (SOA) outcome delivery group with responsibility for a number of functions including community safety.
- 4.2 In January 2018, a development day was held by community safety partners to prepare a new community safety strategic assessment as well as consideration of a possible future structure of community safety arrangements in Inverclyde. During April and May 2018 a series of meetings were held with Alliance partners to consider the structure of the community safety partnership within Inverclyde.
- 4.3 Partners agreed that there was a need for a continuation of a Community Safety Partnership in Inverclyde and identified a requirement of a senior officers group with overall responsibility for community safety arrangements in Inverclyde in addition to a clear structure of sub-groups relating to community safety matters. In June 2018 the first meeting of the Community Safety Partnership Strategy Group (Strategy Group) met to agree the 'Terms of Reference' (ToR).
- 4.4 Working to previous governance arrangements, there were two separate strategic documents, (2017-22 Violence Against Women Strategy and Community Safety Strategic Assessment) which are progressed by the Violence Against Women Multi-agency Partnership and Community Safety Co-ordinating Group respectively. In December 2019, a further update paper was presented to the Inverclyde Alliance Board outlining proposals to create a single community safety strategy and single reporting structure to the Inverclyde Alliance Board.
- 4.5 Following approval by the Inverclyde Alliance, the CSP Strategy Group began preparations for a single strategy with a proposed completion of June 2020. Due to the Covid-19 pandemic, this work has been delayed with a reviewed completion of October 2020 and will now include a consideration of the impact of Covid-19 in a community safety context.
- 4.6 The CSP Strategy Group met on 22 July to consider future improvement actions in the context of a Covid-19 recovery plan, and progress in respect of the publication of the Strategic Assessment 2020-22 and Annual Report 2019-20. These updates are considered in Section 5.

5.0 CSP STRATEGY GROUP UPDATE

5.1 Covid-19 Recovery Plan

5.2 CSP Strategy Group members have considered the strategy in relation to a Covid-19 recovery plan and all partners have confirmed their continued commitment to the CSP strategic assessment and priorities and their commitment of adequate resources for the delivery of improvement actions in line with strategic priorities.

5.3 Inverclyde Community Safety Partnership Strategy 2020-2022- Making Inverclyde Safer

5.4 The Inverclyde Community Safety Partnership has identified three strategic priorities which will contribute to Making Inverclyde Safer Together. Each outcome is linked to the national priorities under the national Building Safer Communities programme. Contained within each outcome are key themes which community safety partners have identified as a priority during the two years of the strategy. Each theme contained within the assessment has identified: a lead group; evidence outlining the problem; and, the responses from the Community Safety Partnership. Progress of each theme will be reported to the Inverclyde Alliance Board on an annual basis. The three outcomes are:

- Reducing Violence, Crime and Disorder

- Reducing Unintentional Harm and Injury
- Building Resilient Communities

5.5 Preparatory work by the CSP Strategy Group and its two sub-groups is ongoing to create improvement action plans during the lifespan of the strategy for the outcomes outlined at paragraph 5.4. These improvement action plans will be reported to the CSP Strategy Group at each meeting to ensure robust scrutiny of planned activity.

5.6 All partners have confirmed their post-Covid commitment to the CSP strategic priorities and their commitment of adequate resources for the delivery of improvement actions in line with strategic priorities.

5.7 As noted in paragraph 2.2 the published strategy will be presented to the Inverclyde Alliance Board at its meeting on 6 October 2020.

5.8 Inverclyde Community Safety Partnership Annual Report 2019-20

5.9 An annual report will be presented to the Inverclyde Alliance Board providing updates from the CSP Coordinating Group and Violence Against Women Multi-Agency Partnership. The annual report will note key achievements by each group during 2019-20 as well as the focus of work during 2020-21 particularly in light of the Covid-19 recovery plan.

6.0 IMPLICATIONS

Finance

6.1 Financial Implications:

One off Costs

Cost Centre	Budget Heading	Budget Years	Proposed Spend this Report	Virement From	Other Comments
N/A					

Annually Recurring Costs/ (Savings)

Cost Centre	Budget Heading	With Effect from	Annual Net Impact	Virement From (If Applicable)	Other Comments
N/A					

Legal

6.2 None

Human Resources

6.3 None

Equalities

6.4 Equalities

(a) Has an Equality Impact Assessment been carried out?

	YES
X	NO – This report does not introduce a new policy, function or strategy or recommend a substantive change to an existing policy, function or strategy. Therefore, no Equality Impact Assessment is required

(b) Fairer Scotland Duty

If this report affects or proposes any major strategic decision:-

Has there been active consideration of how this report's recommendations reduce inequalities of outcome?

	YES – A written statement showing how this report's recommendations reduce inequalities of outcome caused by socio-economic disadvantage has been completed.
X	NO

(c) Data Protection

Has a Data Protection Impact Assessment been carried out?

	YES – This report involves data processing which may result in a high risk to the rights and freedoms of individuals.
X	NO

Repopulation

6.5 N/A

7.0 CONSULTATIONS

7.1 None at present

8.0 BACKGROUND PAPERS

- 8.1 Inverclyde Alliance Board 19 March 2018: 'LOIP Governance and Delivery Structure'.
- 8.2 Inverclyde Council Education and Communities Committee 3 September 2019: 'Community Safety & Resilience Update' (EDUCOM/64/19/HS).
- 8.3 Inverclyde Alliance Board 7 October 2019: 'Inverclyde Community Safety Partnership Update'.
- 8.4 Inverclyde Alliance Board 7 October 2019: 'Violence Against Women Multi-Agency Partnership Update'.
- 8.5 Inverclyde Council Education and Communities Committee 05 November 2019 'Inverclyde Draft Antisocial Behaviour Strategy 2020-25' (EDUCOM/84/19/HS).
- 8.6 Inverclyde Alliance Board 9 December 2019: 'Inverclyde Community Safety Partnership-Proposed Governance Arrangements'.
- 8.7 Inverclyde Council Education and Communities Committee 10 March 2020: 'Inverclyde Antisocial Behaviour Strategy 2020-2025' (EDUCOM/21/20/HS).

**INVERCLYDE COMMUNITY SAFETY PARTNERSHIP
STRATEGY 2020-2022
MAKING INVERCLYDE SAFER TOGETHER
DRAFT (VERSION 4)**

Document Control

Document Responsibility		
Name	Title	Service
William Rice	Team Leader	Communities, Culture & Educational Resources (Inverclyde Council)
Suzanne Black	Community Safety Partnership Analyst	Communities, Culture & Educational Resources (Inverclyde Council)
Ian Hanley	Community Safety Lead Officer	Communities, Culture & Educational Resources (Inverclyde Council)

Document Change History		
Version	Date	Comments
1.0	24-01-20	Initial draft presented to CSP Strategy Group for consideration at meeting on 24 th January 2020.
2.0	07-02-20	New draft reflecting comments from version 1.0. Submitted to CSP Strategy Group for comment.
3.0	01-03-20	New draft reflecting comments from version 2.0. Submitted to CSP Strategy Group for comment by email for 28 February 2020. A draft 2.0 comments sheet has been made to record suggestions/changes. Updated Domestic Abuse statistics.
4.0		New draft reflecting Covid19 pandemic and recovery plan. Addition of home safety as theme.
4.1	05-08-2020	Minor amendments to v4.0 following final comments from CSP Strategic Group members

FOREWORD

Councillor Stephen McCabe, Leader of Inverclyde Council and Chair of Inverclyde Alliance

As chair of the Inverclyde Alliance, the Inverclyde Community Planning Partnership, I am delighted to introduce Inverclyde's Community Safety Strategy for the period 2020-22 which sets out how community safety partners across Inverclyde will work together with Inverclyde's communities to make Inverclyde safer together.

What 'community safety' means will mean different things for different individuals and communities across Inverclyde but ultimately it is about communities being resilient and being able to feel safe and be safe. Within this Strategy the Community Safety Partnership are focusing on three outcomes that aims to help communities feel safe and be safe; reducing violence, crime and disorder, reducing unintentional harm and injury and building resilient communities, more information on what the Community Safety Partnership will do to achieve these outcomes are contained within the strategic assessment.

The Community Safety Partnership have also undertaken a Strategic Needs Assessment to enable the Partnership makes an informed appraisal of where the greatest needs of our communities lie and where partnership working could make the greatest impact.

As Chair of Inverclyde Alliance, the Community Planning Partnership for Inverclyde, there is a commitment to develop and deliver co-ordinated, effective, efficient services together, meeting the needs of our communities and delivering better outcomes for all. In my foreword for the Inverclyde Local Outcomes Improvement Plan I mentioned that partnership working is more important now than it has been with the need to deliver better, more targeted services together, using shared resources where possible and I am confident that the Community Safety Partnership acknowledges this approach.

Councillor Stephen McCabe

Leader of Inverclyde Council

Chair of Inverclyde Alliance

CONTEXT

National Context

The National Performance Framework (NPF) was launched jointly by the Scottish Government and COSLA in June 2018. It sets out eleven long-term outcomes for Scotland, underpinned by 81 national performance indicators against which progress can be measured. In respect of community safety the relevant outcome is:

We live in communities that are inclusive, empowered, resilient and safe.

The Justice Strategy for Scotland also sets out key outcomes to help achieve a just, safe, resilient Scotland and has identified four outcomes to help achieve this:

- We live in safe, cohesive and resilient communities
- Prevention and early intervention improve wellbeing and life chances
- Our systems and interventions are proportionate, fair and effective
- We deliver person-centred, modern and affordable public services.

The Scottish Government and COSLA will establish a new national public health body- Public Health Scotland- by 1st April 2020. As a partnership between national and local government Public Health Scotland's purpose will be to improve and protect Scotland's health and wellbeing and reduce health inequalities. They will also support health and social care by focussing on prevention in order to reduce unsustainable pressures on the system. The Scottish Government and COSLA agreed six public health priorities to support national and local partners across Scotland to work together. This includes the priority: A Scotland where we live in vibrant, healthy and safe places and communities.

Local Context

The Inverclyde Alliance is responsible for community planning in Inverclyde. It is made up of elected representatives and senior officers from across Inverclyde's public and third sector organisations- Greater Glasgow and Clyde NHS, Greenock Chamber of Commerce, Greenock and District Trades Council, Inverclyde Council, Job Centre Plus, Scottish Enterprise, Skills Development Scotland, Scottish Fire and Rescue, Strathclyde Partnership for Transport, Police Scotland, Voluntary Sector representation facilitated by CVS Inverclyde, West College Scotland.

There are a wider range of other organisations involved across the various partnerships which make up the larger Community Planning Partnership including Riverside Inverclyde, local Housing Associations and a variety of voluntary organisations.

The key plan for the delivery of the Inverclyde Alliance is the Inverclyde Outcomes Improvement Plan (2017-22). This plan sets out what the Alliance wants to achieve by way of improving outcomes over the short, medium and long term for the citizens of Inverclyde. Three strategic priorities have been identified which provides the framework for the development of action plans that reflects the needs of our population and the aspirations of our communities with the overall aim of reducing deprivation and inequalities. The three strategic priorities are:

- Population- Inverclyde's population will be stable and sustainable with an appropriate balance of socio - economic groups that is conducive to local economic prosperity and longer term population growth.
- Inequalities - There will be low levels of poverty and deprivation and the gap in income and health between the richest and poorest members of our communities will be reduced.
- Environment, Culture and Heritage- Inverclyde's environment, culture and heritage will be protected and enhanced to create a better place for all Inverclyde residents and an attractive place in which to live, work and visit.

The Police and Fire Reform (Scotland) Act 2012 created a national police force and a national fire and rescue service in Scotland, in addition to this the Act gives local authorities a function in monitoring and scrutinising the role of Police Scotland and The Scottish Fire & Rescue Service through the delivery of local Police plans and local Fire & Rescue Plans. Within Inverclyde scrutiny of the local police plan and local fire plan is carried out by the Inverclyde Council local Police and Fire Scrutiny Committee.

The Community Safety Strategy also links with other local partnerships and strategic documents including the Inverclyde Alcohol and Drugs Partnership annual reports and associated plans and the Inverclyde Community Justice Outcomes Improvement Plan.

For more information on the geography of Inverclyde and its Alliance priorities, please visit <https://www.inverclyde.gov.uk/council-and-government/community-planning-partnership/inverclyde-outcome-improvement-plan>

INVERCLYDE CSP STRUCTURE

This section focuses on the Inverclyde CSP structure setting out the various groups and their respective responsibilities. An organisational chart as of April 2020 showing the overall partnership structure is shown overleaf.

The **Inverclyde Alliance Board** (Inverclyde Alliance) is the Community Planning Partnership for Inverclyde. Inverclyde Alliance is a family of partnerships working on shared priorities and promoting better collaboration in Inverclyde. In respect of community safety the Inverclyde Alliance may remit matters to the Strategy Group for local implementation, a recent example was the implementation of the National Missing Persons Framework.

As community safety partners Inverclyde Council, Police Scotland and Scottish Fire & Rescue service (SFRS) are required to make submissions to Inverclyde Council committee's as per the Inverclyde Council Standard Orders and Scheme of Administration. Depending on the nature of the submission this will either be remitted to the **Inverclyde Council Education and Communities Committee** or **Inverclyde Local Police & Fire Scrutiny Committee**.

The **Inverclyde Community Safety Partnership Strategy Group** (Strategy Group) has the overall responsibility for the delivery of community safety activities in Inverclyde. The Strategy group sets the outcomes and themes on behalf of the overall community safety partnership and monitors the progress of the work carried out by the Inverclyde Community Safety Partnership Coordinating Group and the Inverclyde Violence Against Women Multi Agency Partnership. The Strategy Group also provides feedback in relation to community safety related activity to the Inverclyde Alliance Board at least annually in addition to any issues remitted from the Inverclyde Alliance.

The **Inverclyde Community Safety Partnership Coordinating Group** (Coordinating Group) leads on the relevant themes contained within the strategic assessment on a variety of issues such as violence reduction, antisocial behaviour, dwelling fires, road safety and is currently responsible for the delivery of the Improving Inverclyde Initiative. The Coordinating Group also oversees activity on a number of sub-groups either on a thematic basis or a specific tasking issue (such as planning arrangements for the 5th November).

The **Inverclyde Violence Against Women Multi Agency Partnership** (VAWMAP) leads on the development and integration of a strategic approach to the prevention and elimination of Violence Against Women. The VAWMAP also oversees the activity of sub-groups in relation to the Multi Agency Risk Assessment Conference (MARAC).

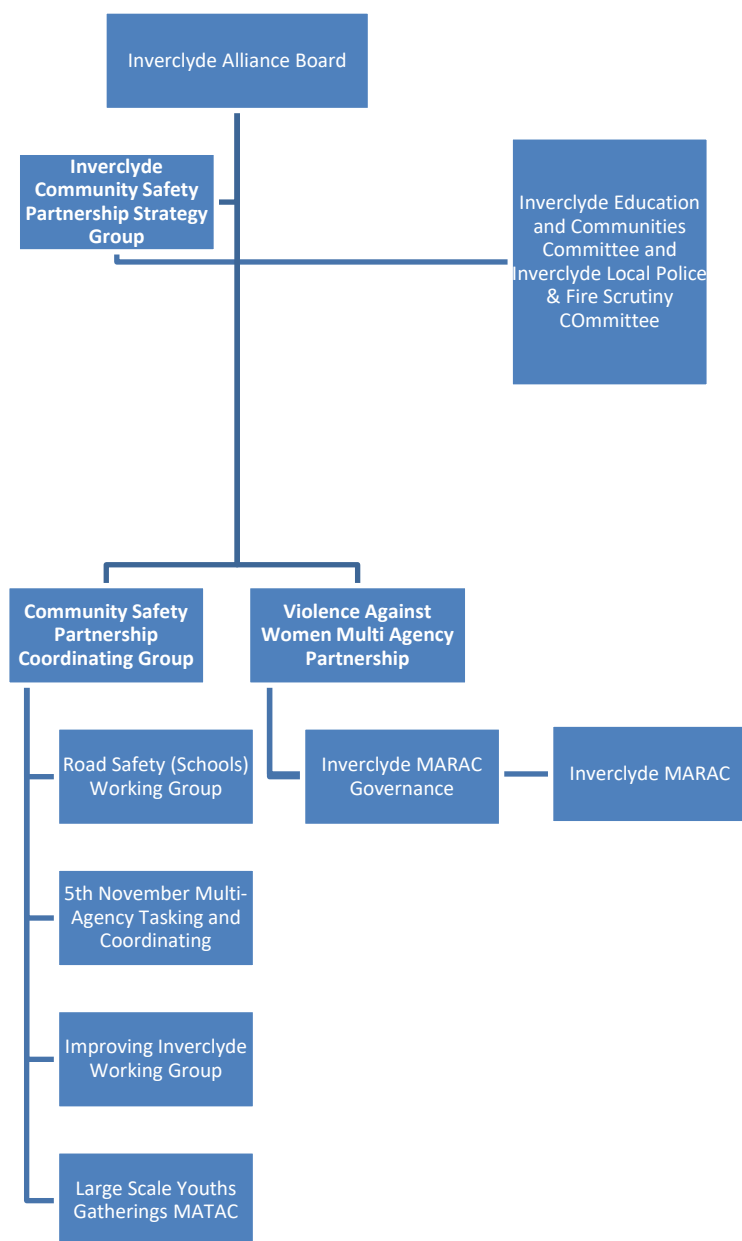
Delivery of the key themes contained within this strategic assessment will be allocated to either the Coordinating Group or VAWMAP for action (noted at each theme). Each group will be required to submit an improvement action plan to the Strategy Group detailing the following requirements:

- The actions regarding the relevant theme outlining the Prevention, Rehabilitation, Information, Communication and Enforcement responses to ensure that the Community Safety Partnership make best use of available resources.
- Any information and data gaps which require to be addressed to ensure that the Coordinating Group or VAWMAP work effectively.

- Any emerging threats which are likely to impact on the work of the Community Safety Partnership during the life time of the strategy.
- A communications plan/strategy outlining how as a Partnership we plan to raise awareness of the need to keep people safe in their communities on a real time campaign basis and long term campaign basis.

Feedback on each action is provided by the relevant lead officer at their respective group and progress is also reported to the Strategy Group by the Coordinating Group and VAWMAP Chair at each meeting.

Community Safety Partnership Structure



METHODOLOGY

In order to identify the outcomes and subsequent themes that will help make Inverclyde's communities safer a wide evidence base has been used. This approach ensures that the activities identified within the improvement action plan are targeted towards the issues, places, communities and individuals most in need. Our three priority outcomes have been identified through national priorities and the key themes identified through available data and current priorities.

Where required, additional analysis has been undertaken on themes identified within this assessment. The following sources have been considered to identify the priority themes:

- Inverclyde Outcomes Improvement Plan 2017-2022
- Inverclyde Strategic Needs Assessment 2017 (in respect of the Inverclyde Outcomes Improvement Plan)
- Local fire and rescue plan for Inverclyde 2017-2020
- Police Scotland Inverclyde Area Plan 2017-2020
- Inverclyde Violence against Women Multi Agency Partnership- Violence against Women Strategy 2017-2022
- Inverclyde Community Justice Outcomes Improvement Plan

In addition to the above, a number of community engagement sources such as the Scottish Household Survey, Inverclyde Citizen's Panel, Our Place Our Future survey and locality planning events (2019). Where relevant, these engagements have been included within the strategy.

As part of the Community Planning element of the Community Empowerment (Scotland) Act 2015, Inverclyde Alliance has a responsibility to develop locality plans for those areas of Inverclyde which experience the greatest inequalities. Work has been ongoing to develop locality arrangements and locality plans across the 6 locality areas in Inverclyde. As this work continues the Community Safety Partnership acknowledge that localities may identify issues around community safety and will work with the locality groups, community organisations and partners in order to identify the actions that can be taken, when they will be taken and allocated responsibility for the implementation of the actions.

In or to inform our priorities evidence was taken from the following publications:

1. Domestic abuse in Scotland: 2018-2019 statistics (Scottish Government, 2020).
2. Fire Safety and Organisational Statistics 2019.
3. Fire and Rescue Incident Statistics 2019.
4. Recorded crime in Scotland: 2018-2019 (Scottish Government, 2019).
5. Reported Road Casualties Scotland 2018 (Transport Scotland, 2019).
6. MAST Online road safety analysis (March 2020).
7. Mid-Year Population Estimates (National Records of Scotland, 2019).
8. Citizen's Panel Spring 2018 (Inverclyde Council, 2018).
9. Our Place Our Future (Inverclyde Alliance, 2017).
10. Scottish Household Survey 2018 (Scottish Government, 2019)

Performance Information

A range of performance indicators have been identified to allow the Community Safety Partnership to measure progress in achieving our outcomes. This annual report includes a selection of performance indicators to illustrate how we are doing. Data for 2018/19 is provided where available however sometimes there is no data update available or that data has yet to be published. Where 2018/19 data has yet to be published, the latest available data is provided. Please note that the performance indicators have been identified from a range of sources. Some of these sources are based on actual measurements, some have been generated from representative samples based on household data or based on a 'per head' of population (the range of the 'per head' population will vary from study to study but the range will be identified throughout the document).

As part of the commitment to improve services and target resources the Community Safety Partnership uses the 'family groups' detailed in the Local Government Benchmarking Framework (LGBF) to compare against other local authorities that are similar in terms of the population they serve (e.g. relative deprivation and affluence) or the type of area in which they serve them (e.g. urban, semi-rural, rural). For Inverclyde, these groupings are:

Family Group by the type of population they serve e.g. level of deprivation and affluence	Family Group by the type of area they serve e.g. rural, semi-rural and urban
Eilean Siar	Angus
Dundee City	Clackmannanshire
East Ayrshire	Midlothian
North Ayrshire	South Lanarkshire
North Lanarkshire	Renfrewshire
West Dunbartonshire	West Lothian
Glasgow City	East Renfrewshire
Inverclyde	Inverclyde

This methodology has helped the Community Safety Partnership to identify key community safety themes which are explained in detail in pages ## to ##.

STRATEGIC ASSESSMENT AT A GLANCE

The Inverclyde Community Safety Partnership has identified three strategic priorities which will help in making Inverclyde Safer Together. Each outcome is linked to national priorities under the Building Safer Communities programme. Contained within each outcome are key themes which community safety partners have identified as a priority during the two years of the strategy. Each theme contained within the assessment has identified a lead group, evidence outlining the problem and the responses from the Community Safety Partnership. Progress of each theme will be reported to the Inverclyde Alliance Board on an annual basis.

Outcome 1- Reducing Violence, Crime and Disorder

The Community Safety Partnership acknowledges the significant impact crimes have on individuals, their families and communities across Inverclyde especially those crimes involving violence. The Partnership is committed to reducing all forms of violence, to reduce the numbers of victims of crime and to work with residents in reducing incidences of disorder. The key themes identified are:

- Violence against Women
- Antisocial Behaviour
- Violence
- Secondary Fire raising

Outcome 2- Reducing Unintentional Harm and Injury

Unintentional Harm and Injury has been defined as predictable and preventable unintentional physical and psychological harm and injury and within Inverclyde focuses on home safety, fire safety and road safety. Within Inverclyde we seek to improve partnership working to enhance home safety awareness, road safety awareness and fire safety awareness. The key themes identified are:

- Dwelling fires
- Water Safety
- Road safety
- Home Safety

Outcome 3- Building Resilient Communities

The Community Safety Partnership want all residents of Inverclyde to live in friendly, vibrant and cohesive communities which value diversity and support those in need. We want to encourage and support our communities to ensure they are resilient, safe and have low levels of crime. The key themes identified are:

- Neighbour Watch/Neighbourhood Alert Scheme
- Mentors in Violence Prevention
- Hate crime awareness
- Child Protection Responsibilities
- Improving Inverclyde Initiative
- Locality Planning Groups
- Crimestoppers / Fearless

OUTCOME 1- REDUCING VIOLENCE, CRIME AND DISORDER IN OUR COMMUNITIES

The Community Safety Partnership acknowledges the significant impact crimes have on individuals, their families and communities across Inverclyde especially those crimes involving violence. The Partnership is committed to reducing all forms of violence, to reduce the numbers of victims of crime and to work with residents in reducing incidences of disorder.

The Community Safety Partnership in this outcome will focus on violence against women, antisocial behaviour, violence and secondary fire raising.

Theme- Violence Reduction

Lead- Coordinating Group

Evidence:

- The number of Group 1 non-sexual crimes of violence¹ recorded in 2018/19 accounts 4% of all crimes recorded in Inverclyde.
- In 2018/19, the rate of Group 1 non-sexual crimes of violence increased to 16.8 per 10,000 of the population in Inverclyde.
- In 2018/19, the rate of Group 1 non-sexual crimes of violence increased to 14.7 per 10,000 of the population in Scotland.
- In 2018/19, Inverclyde was rated 4th highest out of the 8 local authorities in the LGBF grouping by type of population for Group 1 non-sexual crimes of violence per 10,000 of the population.
- In 2018/19, the rate of Handling offensive weapons was 18.8 per 10,000 of the population in Inverclyde.
- In 2018/19, 43% of Handling an offensive weapon crimes in Inverclyde involved a bladed weapon.
- In 2018/19, the rate of Handling offensive weapons was 16.4 per 10,000 of the population in Scotland.
- In 2018/19, Inverclyde was rated 5th highest out of the 8 local authorities in the LGBF grouping by type of population for Handling offensive weapons per 10,000 of the population.
- In the Our Place Our Future survey, of the 1310 responses, 35 people made comments about not feeling safe.

Group 1 crime includes: Murder, Culpable homicide, Attempted murder, Serious assault, Robbery and assault with intent to rob, Threats and extortion, Cruel and unnatural treatment of children, Abortion, Concealment of pregnancy, Possession of a firearm with intent to endanger life, commit crime etc, Abduction, Ill treatment and neglect of mental patients and vulnerable adults, Drugging, Slavery or forced labour and Human organ offences.

What we will do

- We will continue to support the national No Knives Better Lives campaign ensuring that are young people understand the consequences of weapon carrying.

- We will carry out a profile of Inverclyde noting locations in Inverclyde where non-sexual crimes of violence and handling offensive weapons are more prevalent. This will help identify partnership interventions to help reduce violence.
- We will support partners within the Alcohol and Drugs Partnership identify opportunities through a prevention and education model where alcohol use and problem drug use is linked to violence.
- We will continue to promote the use of Crimestoppers and Fearless as opportunities for members of the public to report crime.

Theme- Violence Against Women

Lead- Violence Against Women Multi Agency Partnership

Evidence:

- There were 112 incidents of domestic abuse recorded by the police in Inverclyde per 10,000 of the population in 2018/19. 40% of these incidents included at least one crime or offence.
- There were 112 incidents of domestic abuse recorded by the police in Scotland per 10,000 of the population in 2018/19. 41% of these incidents included a crime or offence.
- For incidents of domestic abuse recorded by the police per 10,000 of the population in 2018/19, Inverclyde is rated the 2nd lowest out of the 8 local authorities in the LGBF grouping by type of population.
- Where gender information was recorded, around four out of every five incidents of domestic abuse in 2018/19 had a female victim and a male accused in Scotland. This proportion has remained very stable since 2011/12.
- In 2018/19, 16% of domestic abuse incidents involved a male victim and a female accused (where gender was recorded). This proportion has remained stable since 2011/12 (ranging from 16% to 18%).

What we will do

- We will support communities in Inverclyde to embrace equality and mutual respect, and reject all forms of violence against women and girls. We will support this by;
 - promoting positive gender roles,
 - people enjoying healthy, positive relationships,
 - Children and young people developing an understanding of safe, healthy and positive relationships from an early age,
 - Individuals and communities recognising and challenging violent and abusive behaviour.
- We will support women and girls in Inverclyde to thrive as equal citizens: socially, culturally, economically and politically. We will support this by;
 - Women and girls being safe, respected and equal in our communities,
 - Women and men having equal access to power and resources.

- We will support interventions that are early and effective, prevent violence and maximise the safety and wellbeing of women, children and young people. We will have achieved this when;
 - Women, children and young people accessing relevant, effective and integrated services,
 - Service providers competently identifying violence against women and girls and responding effectively to women, children and young people affected.
- We will challenge men to desist from all forms of violence against women and girls and perpetrators of such violence receive a robust and effective response. We will do this by;
 - Ensuring justice responses are robust, swift, consistent and coordinated,
 - Identifying men early who carry out violence against women and girls and the criminal justice system holding them to account,
 - Making relevant links between the experience of women, children and young people in the criminal and civil system.

Theme- Antisocial Behaviour

Lead- Coordinating Group

Evidence:

- There were 96 incidents of antisocial behaviour per 1,000 of the population in Inverclyde during 2018/19.
- There were 278 incidents of antisocial behaviour committed by youths per 1,000 of the population in Inverclyde during 2018/19.
- In the Scottish Household Survey 2018 (SHS) 94.4% of respondents from Inverclyde rated their neighbourhood as a very/fairly good place to live. The same indicator for Scotland is 94.6. Similarly in the Inverclyde Citizens' Panel, 86% of respondents rated their neighbourhood as a place to live as very satisfied/satisfied.
- In the Scottish Household Survey the percentage of people agreeing with statements about their neighbourhood strengths are as follows; 85% either strongly agreed or tended to agree that their neighbourhood is a place where people are kind to each other and 79% either strongly agreed or tended to agree that their neighbourhood is a place where most people can be trusted. The Scottish rate was 82% and 78% respectively.
- In the Citizens' Panel 90% of respondents said that they feel either fairly or very safe outside during the day, when asked how safe they feel in their neighbourhood outside at night, 68% of respondents stated either very or fairly safe.
- In the Citizens' Panel 10% of all respondents said that they had noticed a reduction in anti-social behaviour in their neighbourhood in the past 12 months. Forty one percent said that they had not noticed a reduction and 49% of respondents said that "Anti-social behaviour is not an issue in my neighbourhood".
- In the Our Place Our Future survey, of the 1310 responses, 23 people made comments about youths with the majority making comment in relation to young people committing antisocial behaviour or the fear of seeing large groups of youths.

- In 2018/19, Inverclyde was above the Scottish average for the percentage of attacks on SFRS personnel per number of all SFRS incidents.

What we will do

- We will introduce an Inverclyde Antisocial Behaviour Strategy during 2020 ensuring that Inverclyde Council and Police Scotland meet their legislative requirement under the Antisocial Behaviour etc. (Scotland) Act 2004.
- We will create an antisocial behaviour policy document setting out how partners will respond to antisocial behaviour in Inverclyde.
- We will plan a partnership response to large scale youth gatherings.

Theme- Secondary Fire Raising

Lead- Coordinating Group

Evidence:

- There were 45 deliberate secondary fires per 10,000 population attended by the SFRS in Inverclyde during 2018/19.
- Deliberate secondary fires accounted for 67% of all fires in Inverclyde in 2018/19.
- There were 23 deliberate secondary fires per 10,000 population attended by the SFRS in Scotland during 2018/19.
- Deliberate secondary fires accounted for 47% of all fires in Scotland in 2018/19.
- Inverclyde had the highest rate per 10,000 population of deliberate secondary fires in Scotland during 2018/19.

What we will do

- There will be an action plan detailing partnership responses into secondary fires that occur between April and June (quarter 1)
- We will plan a partnership response for the period leading up to and including the 5th November.

OUTCOME 2- REDUCING UNINTENTIONAL HARM AND INJURY IN OUR COMMUNITIES

Unintentional Harm and Injury has been defined as predictable and preventable unintentional physical and psychological harm and within Inverclyde focuses on home safety, fire safety and road safety. Within Inverclyde we seek to improve partnership working to enhance home safety awareness, road safety awareness and fire safety awareness.

The Community Safety Partnership in this outcome will focus on dwelling fires, road safety, home safety and water safety.

Theme- Dwelling Fires

Lead- CSP Coordinating Group

Evidence:

- There were 24 primary dwelling fires per 10,000 dwellings attended by the SFRS in Inverclyde during 2018/19.
- There were 20 primary dwelling fires per 10,000 dwellings attended by the SFRS in Scotland during 2018/19.
- In 2018/19, Inverclyde was rated 5th highest out of the 8 local authorities in the LGBF grouping by type of population for primary dwelling fires per 10,000 dwellings.
- The rate of dwelling fires is 4.5 times higher in the 20% least deprived areas of Scotland than the 20% most deprived.
- There were 52 fatal casualties per 1,000 accidental dwelling fires in Inverclyde during 2018/19.
- There were 8 fatal casualties per 1,000 accidental dwelling fires in Scotland during 2018/19.³
- In 2018/19, Inverclyde was rated highest out of the 8 local authorities in the LGBF grouping by type of population for fatal casualties per 1,000 accidental dwelling fires.
- There were 299 non-fatal casualties per 1,000 accidental dwelling fires in Inverclyde during 2018/19.
- There were 190 non-fatal casualties per 1,000 accidental dwelling fires in Scotland during 2018/19.
- In 2018/19, Inverclyde was rated 2nd highest out of the 8 local authorities in the LGBF grouping by type of population for non-fatal casualties per 1,000 accidental dwelling fires.
- Inverclyde is the second highest ranking local authority for the number of home fire safety visits as a percentage of the number of households (4.1%).

What we will do:

- We will offer experiential training to care providers across Inverclyde to help reduce the risk of our most vulnerable residents being involved in dwelling fires
- We will identify areas of Inverclyde where dwelling fires are above the Scotland and Inverclyde average and provide targeted responses particularly to those residents who are most vulnerable
- We will work with private landlords to ensure properties meet the required legal standard

- We will consider an Inverclyde approach to supporting residents ahead of mandatory fire detection in all homes following changes to legislation.

Theme- Water Safety

Lead- Coordinating Group

Evidence:

- There were 27 incidents involving concern for person/s in a body of water between April 2014 and March 2019 in Inverclyde, as reported to Inverclyde Council, Police Scotland or SFRS.
- There were 3.84 rescue or evacuation from water incidents by the SFRS per 100,000 of the population in Inverclyde during 2018/19. All incidents involving concern for person/s in a body of water were attended by SFRS in 2018/19.
- There were 3.16 rescue or evacuation from water incidents by the SFRS per 100,000 of the population in Scotland during 2018/19.
- In 2018/19, Inverclyde was rated 2nd highest out of the 8 local authorities in the LGBF grouping by type of area for rescue or evacuation from water incidents by the SFRS.

What we will do

- We will create a water safety reference group outlining bodies of water in Inverclyde and partnership responses to water safety.

Theme- Road Safety

Lead- Coordinating Group

Evidence:

- In 2018, the rate of reported accidents was 14.6 per 100 million vehicle km in Inverclyde.
- In 2018, the rate of reported accidents was 13.3 per 100 million vehicle km in Scotland.
- In 2018, Inverclyde was rated 2nd highest out of the 8 local authorities in the LGBF grouping by type of area for reported accidents per 100 million vehicle km.
- Of the reported accidents occurring in Inverclyde, 83% of casualties resided in Inverclyde and 6% resided in Renfrewshire, in 2018.
- In 2018, the rate of reported casualties injured in accidents was 1.23 per 1,000 population in Inverclyde.
- In 2018, the rate of reported casualties injured in accidents was 1.55 per 1,000 population in Scotland.
- In 2018, Inverclyde was rated 6th highest out of the 8 local authorities in the LGBF grouping by type of area for reported casualties injured in accidents per 1,000 population.
- In 2018, 18% of the reported casualties were seriously injured in accidents in Inverclyde and there were no fatalities.
- On average, 2 children, aged 0-15 years, have been seriously injured per year from 2014 to 2018 in Inverclyde.
- In 2018, 20% of the reported casualties injured in accidents in Inverclyde were pedestrians.

- In the Our Place Our Future survey, there were comments made in relation to vehicles parking on pavements, some comments in relation to parking on pavements near early year's centres/schools. In addition to this there were a handful of comments in relation to making streets safer by reduced speed limits/enhanced safety measures.

What we will do

- Commitment to the continued existence of the Schools Road Safety Working Group.
- Raise awareness of the forthcoming legislation on pavement parking.
- Raise awareness of the Scottish Government Framework for Road Safety up to 2030.
- To continue to provide a Road Safety Education Programme.

Home Safety

Lead- Coordinating Group

Evidence:

- There were 8.8 emergency admissions to hospital as a result of a fall in Inverclyde per 1,000 of the population in 2018/19³, when considering all ages.
- For ages 85+, there were 65.5 emergency admissions to hospital as a result of a fall in Inverclyde per 1,000 of the population in 2018/19.
- There were 6.9 emergency admissions to hospital as a result of a fall in Scotland per 1,000 of the population in 2018/19, when considering all ages.
- For ages 85+, there were 69.6 emergency admissions to hospital as a result of a fall in Scotland per 1,000 of the population in 2018/19.
- For emergency admissions to hospital as a result of a fall per 1,000 of the population in the age 85+ bracket, Inverclyde was rated 5th highest out of the 8 local authorities in the LGBF grouping by type of population in 2018/19.

3 provisional figures for 2018/19 Revised publication - Summary of emergency admissions for unintentional injuries resulting from a fall up to March 2019 (ISD, 27/8/2019).

What we will do

- We will create a home safety reference group home safety concerns in Inverclyde and partnership responses to home safety.

OUTCOME 3- BUILDING RESILIENT COMMUNITIES

The Community Safety Partnership want all residents of Inverclyde to live in friendly, vibrant and cohesive communities which value diversity and support those in need. We want to encourage and support our communities to ensure they are resilient, safe and have low levels of crime.

The Community Safety Partnership in this outcome will support work on neighbourhood watch, an area based initiative called 'Improving Inverclyde', the continued work in the Mentors in Violence Prevention approach, supporting those at risk of hate crime and extremism, supporting the work of Crimestoppers and their youth version 'Fearless' and supporting our communities through locality planning.

Theme- Neighbourhood Watch/Neighbourhood Alert Scheme

Lead- Coordinating Group

Evidence:

- As of April 2020 there are 32 registered Neighbourhood Watch Schemes in Inverclyde (membership ranges from individual streets to neighbourhood areas to as wide as community council areas).
- As of April 2020 there are approximately 150 individuals signed up to receive updates via the Neighbourhood Alert Scheme.

What we will do

- We will continue to support communities across Inverclyde create Neighbourhood Watch Schemes
- We will work with Neighbourhood Watch Scotland to introduce the Neighbourhood Alert Scheme in Inverclyde.
- We will work with surrounding community safety partnership to consider the roll out of a rural watch scheme.

Theme- Improving Inverclyde Initiative

Lead- Coordinating Group

Evidence:

- Police Scotland, Inverclyde Council and the Violence Reduction Unit jointly developed the idea of an area based pilot initiative.
- Assessment based on the triple criteria of crime statistics, SIMD outcomes and existing community engagement and capacity identified Port Glasgow as being the most appropriate area for the pilot

What we will do

- We will introduce the Improving Inverclyde Initiative to the Port Glasgow area during 2020

Theme- Mentors in Violence Prevention

Lead- Coordinating Group

Evidence:

- Mentoring in Violence Prevention (MVP) is a partnership approach, based in schools, which aims to promote positive relationships and reduce violence, particularly gender-based violence and bullying. It utilises a creative bystander approach where males and females are not looked on as potential victims or perpetrators but as empowered and active bystanders who have the ability to support and challenge peers.
- In 2018/19 MVP mentor sessions were delivered to 5 secondary schools to 85 pupils.

What we will do

- We will continue to support our young people by offering the Mentors in Violence Prevention programme across all secondary schools in Inverclyde.

Theme- Hate Crime Awareness

Lead- Coordinating Group

Evidence:

- The number of reported hate incidents recorded in 2018/19 accounts for 0.2% of all incidents recorded by Police Scotland in Inverclyde.
- In 2018/19, the rate of reported hate incidents in Inverclyde was 5 per 10,000 of the population.

What we will do

- We will support local partners to create an Inverclyde hate crime awareness group to ensure our vulnerable communities and those at risk of extremism are supported.
- Where hate crime issues are identified, we will support communities in creating a forum for inter community discussion in Inverclyde.
- Equality & Diversity will be embedded in every aspect of community safety planning in Inverclyde to promote positive relationships and community cohesion.

Theme- Locality Planning (Community Safety Themes)

Lead- Coordinating Group

Evidence:

- A series of six locality engagement events were held during August and September 2019, "Celebrate the Present, Shape the Future". The purpose of the events was to begin building positive relationships with communities by giving local people the opportunity to celebrate and recognise what is good about their area and discuss the key issues and priorities to inform the development of locality plans. Across the events attendees have raised issues of community safety within their locality.

What we will do

- We will support locality partnerships across Inverclyde in responding to community safety issues that impact localities and their communities.

Theme- Crimestoppers / Fearless

Lead- Coordinating Group

Evidence:

- Crimestoppers are an independent charity that gives people the power to speak up to stop crime.
- Fearless is a service for young people to allow them to pass information on about crime anonymously.

What we will do

- We will work with Crimestoppers to introduce an Inverclyde wide campaign in 2020.

Theme- Child Protection Responsibilities

Lead- Coordinating Group

Evidence:

- The number of Group 2 sexual crimes⁴ recorded in 2018/19 accounts for 5% of all crimes recorded in Inverclyde.
- In 2018/19 the rate of Group 2 sexual crimes in Inverclyde decreased to 20.9 per 10,000 of the population.
- In 2018/19, the rate of Group 2 sexual crimes increased to 24.9 per 10,000 of the population in Scotland.
- In 2018/19, Inverclyde was rated 4th highest out of the 8 local authorities in the LGBF grouping by type of population for Group 2 sexual crimes per 10,000 of the population.
- At least 30% of sexual crimes in Inverclyde related to a victim under the age of 18 in 2018/19.

What we will do

- We will work with community safety partners and the Inverclyde Child Protection Committee to identify training with night time economy providers in order to have safeguarded measures which will help keep children safe from [sexual] exploitation.

COVID-19 PANDEMIC

Preparation for this document started prior to the emergence of the Covid-19 pandemic and given the significant impact it has had in Inverclyde, the Community Safety Partnership recognise that the work of community safety partners will require change as part of a covid-19 recovery plan.

All key theme, outcomes and improvement actions have been considered in light of the pandemic and there is confirmation from all partners of their continued commitment to the CSP Strategic Outcomes and their commitment of adequate resources for the delivery of the improvement actions in line with the strategy priorities.

MEASURING OUR PROGRESS

In order to measure our progress in achieving the community safety outcomes we will use a range of indicators. These outcome measures will be monitored on an ongoing basis and reported to the Inverclyde Community Safety Partnership Strategy Group and Inverclyde Alliance. In addition to this more detailed indicators and improvement actions are regularly reported to the Inverclyde Community Safety Partnership Coordinating Group and Inverclyde Violence Against Women Multi-Agency Partnership.

In respect of locality planning it is expected that community safety issues will be raised as the locality partnerships are established across Inverclyde.

Violence Against Women	
Measurement	Source
Incidents of domestic abuse recorded in Inverclyde per 10,000 of the population.	Police Scotland
Incidents of domestic abuse recorded in Inverclyde where a crime or offence has been recorded.	Police Scotland
Incidents of domestic abuse recorded in Scotland per 10,000 of the population.	Police Scotland
Incidents of domestic abuse recorded in Scotland where a crime or offence has been recorded.	Police Scotland

Antisocial Behaviour	
Measurement	Source
Incidents of antisocial behaviour per 1,000 of the population in Inverclyde	Inverclyde Council
Incidents of antisocial behaviour committed by youths per 1,000 of the population	Inverclyde Council
Inverclyde rating of neighbourhood as being very/fairly good place to live	Scottish Household Survey
Scotland rating of neighbourhood as being very/fairly good place to live	Scottish Household Survey
Percentage of people agreeing with statements about their neighbourhood strengths- This is a neighbourhood where people are kind to each other (Strongly agree/tend to agree)	Scottish Household Survey
Percentage of people agreeing with statements about their neighbourhood strengths- This is a neighbourhood where most people can be trusted (Strongly agree/tend to agree)	Scottish Household Survey
How satisfied are you with Inverclyde as a place to live?	Inverclyde Citizens' Panel
How satisfied are you with your neighbourhood as a place to live?	Inverclyde Citizens' Panel
How concerned are you about the following issues in your neighbourhood?	Inverclyde Citizens' Panel

How safe do you feel in your neighbourhood? Outside during the day	Inverclyde Citizens' Panel
How safe do you feel in your neighbourhood? Outside at night	Inverclyde Citizens' Panel
How often have you felt unsafe in your neighbourhood in the past year?	Inverclyde Citizens' Panel
Have you or anyone in your household been a victim of crime or anti-social behaviour in the last 12 months?	Inverclyde Citizens' Panel
Have you noticed a reduction in anti-social behaviour in your neighbourhood in the past 12 months?	Inverclyde Citizens' Panel

Secondary Fire Raising	
Measurement	Source
deliberate secondary fires per 10,000 population in Inverclyde attended by the SFRS	Scottish Fire & Rescue Service
Deliberate secondary fires against all fires in Inverclyde (%)	Scottish Fire & Rescue Service
deliberate secondary fires per 10,000 population in Scotland attended by the SFRS	Scottish Fire & Rescue Service
Deliberate secondary fires against all fires in Scotland (%)	Scottish Fire & Rescue Service

Violence	
Measurement	Source
The number of Group 1 non-sexual crimes of violence ¹ recorded in 2018/19 against all crimes recorded in Inverclyde.	Police Scotland
The rate of Group 1 non-sexual crimes of violence per 10,000 of the population in Inverclyde.	Police Scotland
The rate of Group 1 non-sexual crimes of violence per 10,000 of the population in Scotland.	Police Scotland
The rate of Handling offensive weapons per 10,000 of the population in Inverclyde.	Police Scotland
The rate of Handling offensive weapons per 10,000 of the population in Scotland.	Police Scotland
The percentage of handling an offensive weapon involving a bladed weapon	Police Scotland

Primary Dwelling Fires	
Measurement	Source
Primary dwelling fires per 10,000 dwellings attended by the SFRS in Inverclyde	Scottish Fire & Rescue Service
Primary dwelling fires per 10,000 dwellings attended by the SFRS in Scotland	Scottish Fire & Rescue Service

The rate of dwelling fires in the 20% least deprived areas of Scotland than the 20% most deprived.	Scottish Fire & Rescue Service
Fatal casualties per 1,000 accidental dwelling fires in Inverclyde	Scottish Fire & Rescue Service
Fatal casualties per 1,000 accidental dwelling fires in Scotland	Scottish Fire & Rescue Service
Non-fatal casualties per 1,000 accidental dwelling fires in Inverclyde	Scottish Fire & Rescue Service
Non-fatal casualties per 1,000 accidental dwelling fires in Scotland	Scottish Fire & Rescue Service
Number of home fire safety visits as a percentage of the number of households	Scottish Fire & Rescue Service

Water Safety	
Measurement	Source
Incidents involving concern for person/s in a body of water in Inverclyde, as reported to Inverclyde Council, Police Scotland or SFRS.	Inverclyde Council Police Scotland Scottish Fire & Rescue Service
Rescue or evacuation from water incidents by the SFRS per 10,000 of the population in Inverclyde.	Scottish Fire & Rescue Service
Rescue or evacuation from water incidents by the SFRS per 10,000 of the population in Scotland.	Scottish Fire & Rescue Service

Road Safety	
Measurement	Source
The rate of reported accidents was per 100 million vehicle km in Inverclyde.	Transport Scotland
The rate of reported accidents was per 100 million vehicle km in Scotland.	Transport Scotland
Reported accidents occurring in Inverclyde, with casualties resided in Inverclyde	Transport Scotland
The rate of reported casualties injured in accidents per 1,000 population in Inverclyde.	Transport Scotland
The rate of reported casualties injured in accidents per 1,000 population in Scotland.	Transport Scotland
Percentage of reported casualties killed or seriously injured in Inverclyde	Transport Scotland
Aged 0-15 years have been seriously injured in Inverclyde.	Transport Scotland
Reported casualties and percentage of pedestrians.	Transport Scotland

Neighbourhood Watch	
Measurement	Source
The number of Neighbourhood Watch Schemes in Inverclyde	Neighbourhood Watch Scotland
The number of individuals signed up to Neighbourhood Alert Scheme	Neighbourhood Watch Scotland

Hate Crime	
Measurement	Source
The number of reported hate incidents recorded accounting of all incidents recorded by Police Scotland in Inverclyde.	Police Scotland
The rate of reported hate incidents in Inverclyde	Police Scotland